

# SKETCH TO ACCOMPANY FIELD NOTES

VERNON M. BONNET  
(75.35 AC.)  
VOLUME 455, PAGE 439 O.R.W.C.TX.  
W.C.A.D. R031485 R085517

(1.759 ACRES)  
KEN THOMAS and spouse,  
ANNETTE BOYLE-THOMAS  
DOCUMENT NO.  
2002082118 O.R.W.C.TX.  
W.C.A.D. R430184

JOHN D. ANDERSON SURVEY, A-16

0.103 ACRE  
4467 SQ. FT.  
WASTEWATER EASEMENT

CABALLO RANCH INVESTMENTS, L.P.  
86-043 ACRES  
DOCUMENT NO. 2005058328

5.163 ACRES  
INDIGO CAPITAL ASSETS, LLC  
DOC.# 2005036441

POINT OF  
COMMENCEMENT

POINT OF  
BEGINNING

N 69°40'44" E 462.53'

30' TEMPORARY  
WORKING SPACE EASEMENT

25

CABALLO SECTION 4  
PROPOSED  
DOC.#

SCALE: 1" = 100'

**LEGEND**

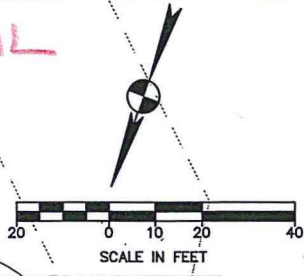
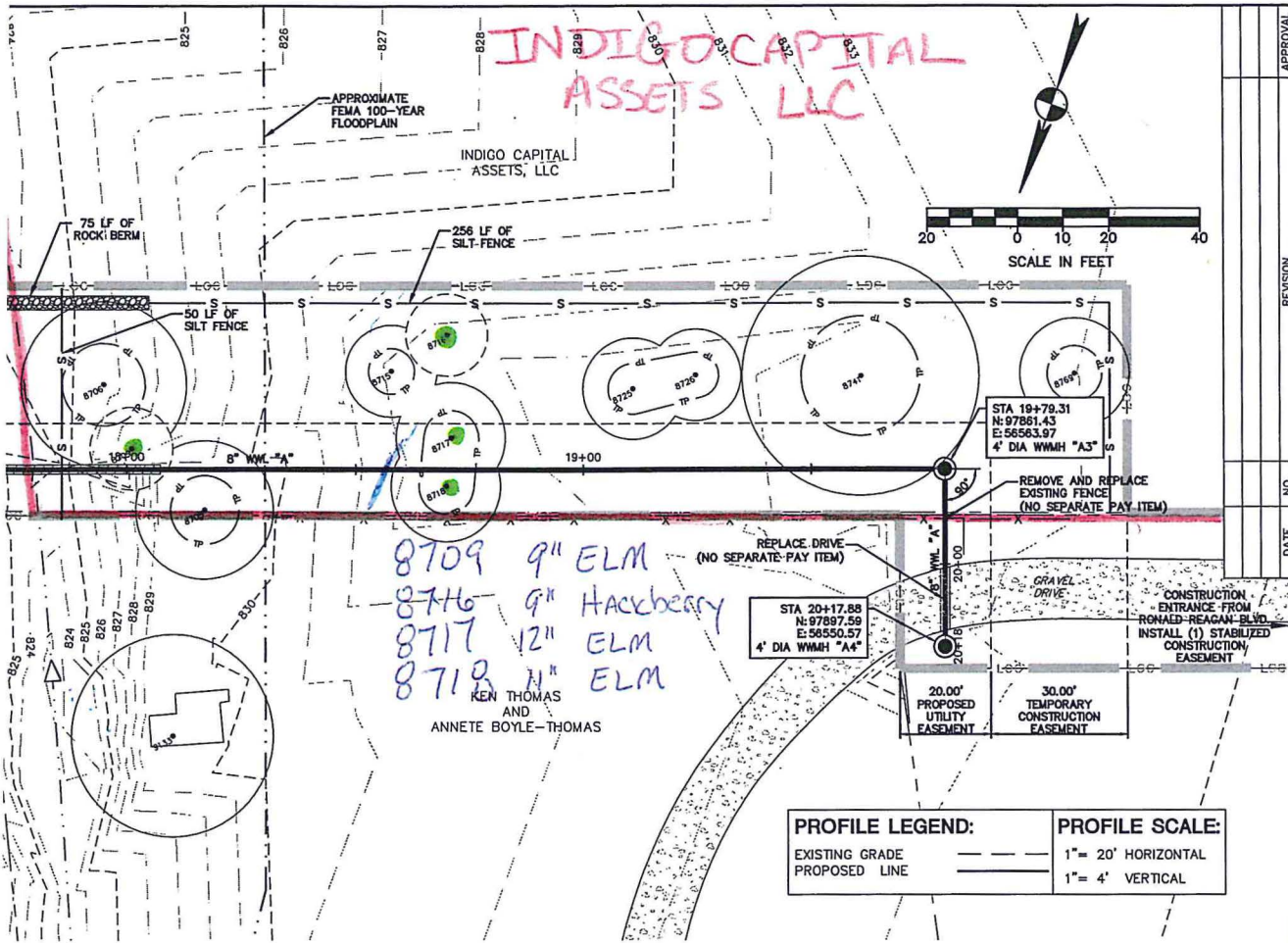
- ▲ CALCULATED POINT
- 1/2" IRON ROD FOUND

LINE TABLE		
LINE	LENGTH	BEARING
L1	222.34	N69°40'44"E
L2	20.10	S26°07'07"E
L3	224.37	S69°40'44"W
L4	20.00	N20°19'16"W

BEARING BASIS: CABALLO RANCH SECTION 1, CABINET EE, SLIDE 212  
DOCUMENT NO. 2008021002, OFFICIAL PUBLIC RECORDS OF WILLIAMSON COUNTY,  
TEXAS

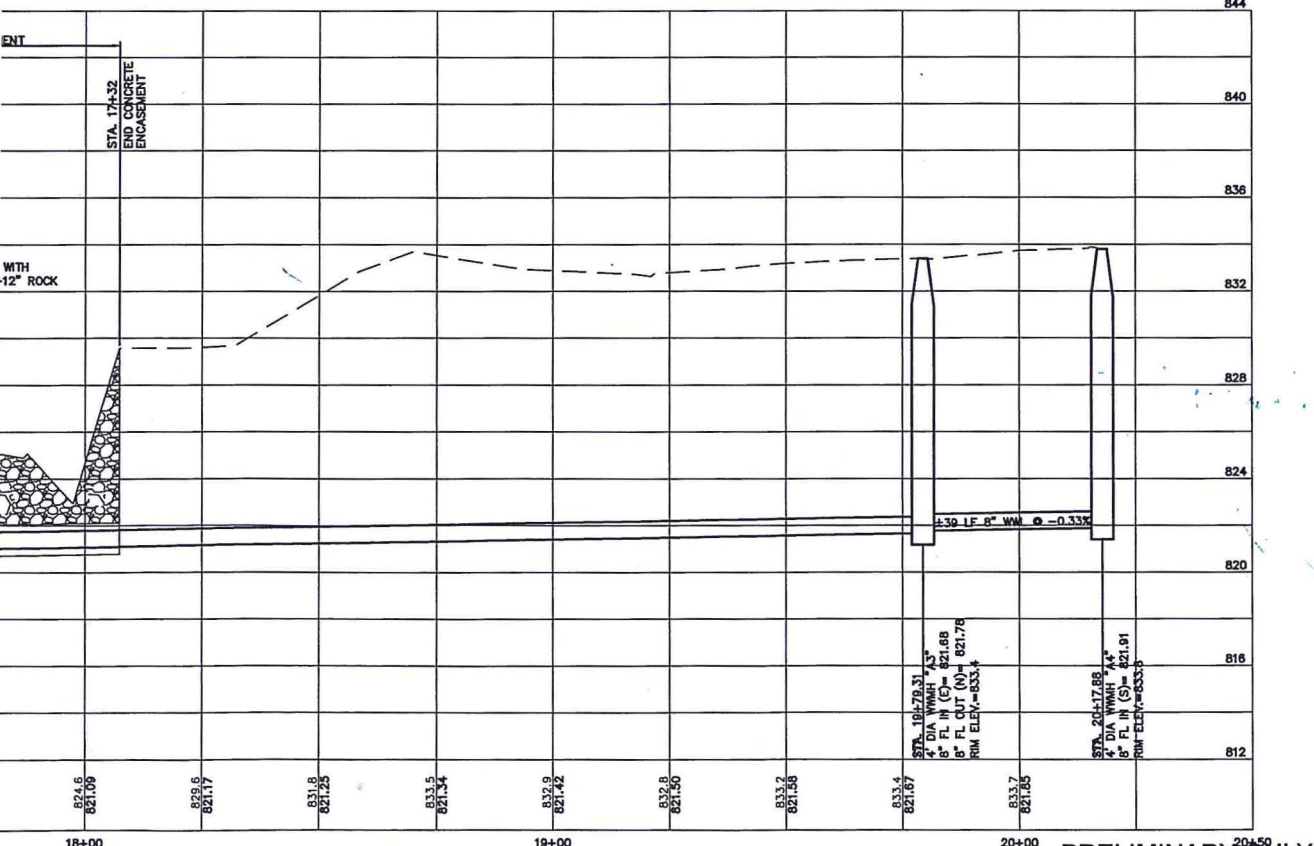


**Carlson, Brigrance & Doering, Inc.**  
Civil Engineering   ♦   Surveying  
5501 West William Cannon Drive   ♦   Austin, Texas 78749  
Phone No. (512) 280-5160   ♦   Fax No. (512) 280-5165



8709 9" ELM  
 8716 9" Hackberry  
 8717 12" ELM  
 8719 4" ELM  
 KEN THOMAS  
 AND  
 ANNETTE BOYLE-THOMAS

PROFILE LEGEND:		PROFILE SCALE:	
EXISTING GRADE	---	1" = 20' HORIZONTAL	
PROPOSED LINE	—	1" = 4' VERTICAL	



<b>Bury+Partners</b> <small>221 West Sixth Street, Suite 600          Austin, Texas 78701          Tel. (512)328-0011 Fax (512)328-0025          TBE Registration Number P-1048          Bury+Partners, Inc. © Copyright 2012</small>	<b>WASTEWATER LINE A</b> <b>STA 12+00 - 14+86</b>	<b>RONALD REAGAN</b> <b>WASTEWATER LINE</b> <b>IMPROVEMENTS</b> <b>CITY OF CEDAR PARK</b>
THIS DOCUMENT IS RELEASED FOR THE PURPOSE OF INTERIM REVIEW UNDER THE AUTHORITY OF T. JASON ROBERTS TX P.E. #98233 ON THE DATE SHOWN ON THE DATE STAMP. IT IS NOT TO BE USED FOR CONSTRUCTION, BIDDING, OR PERMIT PURPOSES.	SHEET <b>P-2</b>	
PLOTTING SCALE: 1" = 1' DATE PLOTTED: 03/06/2012 FILE: 100761002WPP-4.DWG DRAWN BY: MLH/GA DESIGNED BY: TUR REVIEWED BY: TUR PROJECT NO: 100761-80002	PRELIMINARY ONLY NOT FOR BIDDING OR CONSTRUCTION	

P:\G AutoCAD\100761\80002\100761002WPP-4.dwg modified by galvarez on Mar 06, 2012 - 3:43pm